

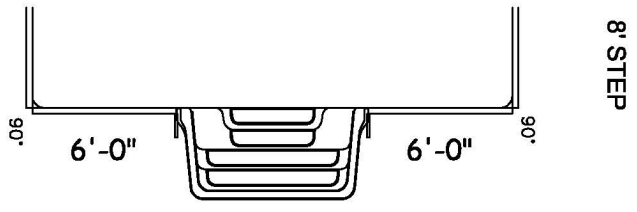
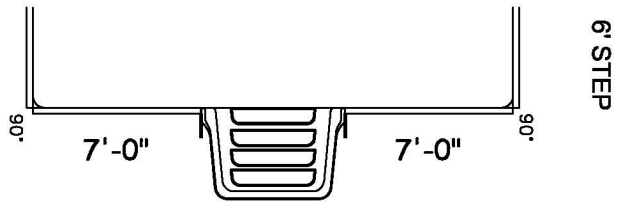
CLASSIC STEEL
20-0 X 40-0 RECTANGLE-6IN RAD

PART#: ISK-RE-2040-06-STD	SURFACE AREA: (ft ²): 800	PERIMETER: 120'-0"
DATE: 01/01/07	LINER AREA (ft ²): 800	VOLUME (US Gal): 26,262
SCALE: 1/8" = 1'-0"	SFTY COVER AREA (ft ²): 924	VOLUME (Litres): 99,412



MEETS DEPTH AND SHAPE MINIMUM STANDARD ANS/INSP15-2003

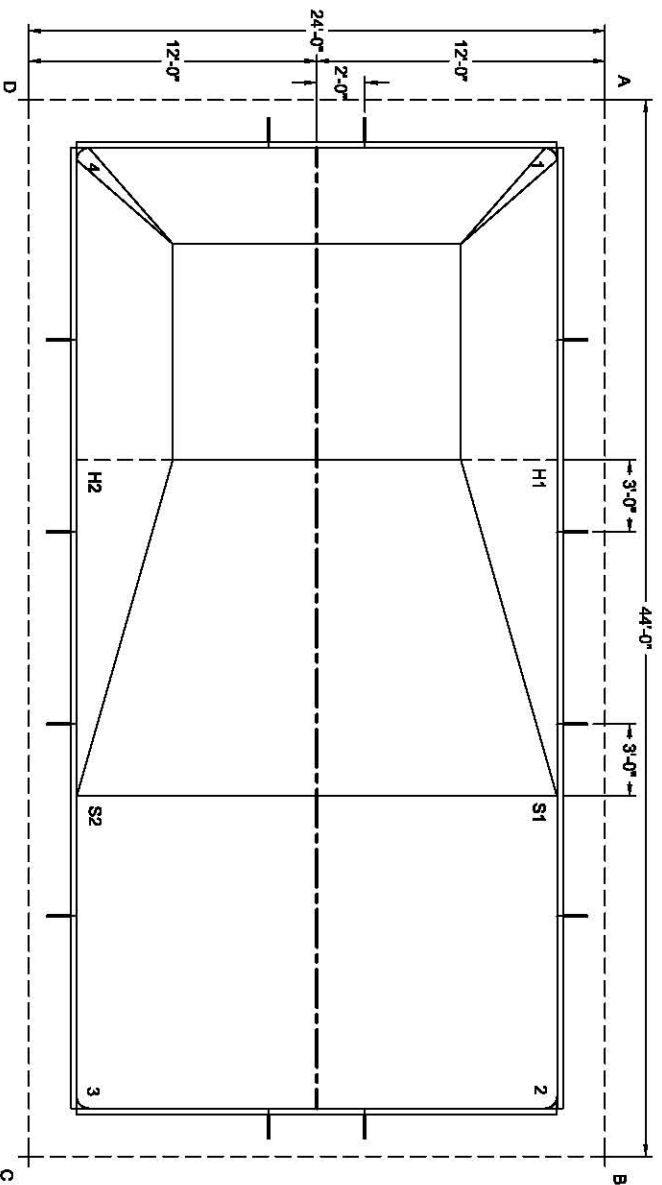
DIVING/SLIDING EQUIPMENT SHALL BE DESIGNED FOR SWIMMING POOLS AND SHALL BE INSTALLED IN ACCORDANCE WITH THE DIVING/SLIDING EQUIPMENT MANUFACTURER'S SPECIFICATIONS. PLEASE CONTACT THE DIVING/SLIDING EQUIPMENT MANUFACTURER FOR THEIR SPECIFICATIONS.



RECTANGLE-6IN RAD

DWG#: **CLRE06SS2040-07**

SHEET: 1 OF 2



	A	B	C	D
1	2'-10"	42'-0 1/2"	47'-5"	22'-1"
2	42'-0 1/2"	2'-10"	22'-1"	47'-5"
3	47'-5"	22'-1"	2'-10"	42'-0 1/2"
4	22'-1"	47'-5"	42'-0 1/2"	2'-10"
S1	29'-0 3/4"	15'-1 1/2"	26'-7 1/2"	36'-4 3/4"
S2	36'-4 3/4"	26'-7 1/2"	15'-1 1/2"	29'-0 3/4"
H1	15'-1 1/2"	29'-0 3/4"	36'-4 3/4"	26'-7 1/2"
H2	26'-7 1/2"	36'-4 3/4"	29'-0 3/4"	15'-1 1/2"
A	-	44'-0"	50'-1 1/2"	24'-0"

BILL OF MATERIALS	STEP	NO	6'	8'
8'-0" STRAIGHT - HS10850M	1	1	1	1
8'-0" STRAIGHT - PLAIN	11	9	9	9
8'-0" STRAIGHT - HR	2	2	2	2
7'-0" STRAIGHT - PLAIN	-	2	-	-
6'-0" STRAIGHT - PLAIN	-	-	-	2
4'-0" STRAIGHT - PLAIN	2	1	1	1
6" RADIUS PVC INSERT (42" HIGH)	4	4	4	4
ANGLE 90 DEG 14GA	4	4	4	4
A-FRAME	12	12	12	12
HARDWARE, STRAIGHT 160 PACK	2	2	2	2
REBAR, STAKE 18 IN. (25 PACK)	2	2	2	2
OPTIONAL DECK SUPPORT	42	39	39	39

DIAGONALS	
1 TO 2	40'-0"
1 TO 3	44'-8 3/4"
1 TO 4	20'-0"
1 TO S1	27'-0"
1 TO S2	33'-7 1/4"
1 TO H1	13'-0"
1 TO H2	23'-10 1/4"
2 TO 3	20'-0"
2 TO 4	44'-8 3/4"
2 TO S1	13'-0"
2 TO S2	23'-10 1/4"
2 TO H1	27'-0"
2 TO H2	33'-7 1/4"
3 TO 4	40'-0"
3 TO S1	23'-10 1/4"
3 TO S2	13'-0"
3 TO H1	33'-7 1/4"
3 TO H2	27'-0"
4 TO S1	33'-7 1/4"
4 TO S2	27'-0"
4 TO H1	23'-10 1/4"
4 TO H2	13'-0"
S1 TO S2	20'-0"
S1 TO H1	14'-0"
S1 TO H2	24'-5"
S2 TO H1	24'-5"
S2 TO H2	14'-0"
H1 TO H2	20'-0"